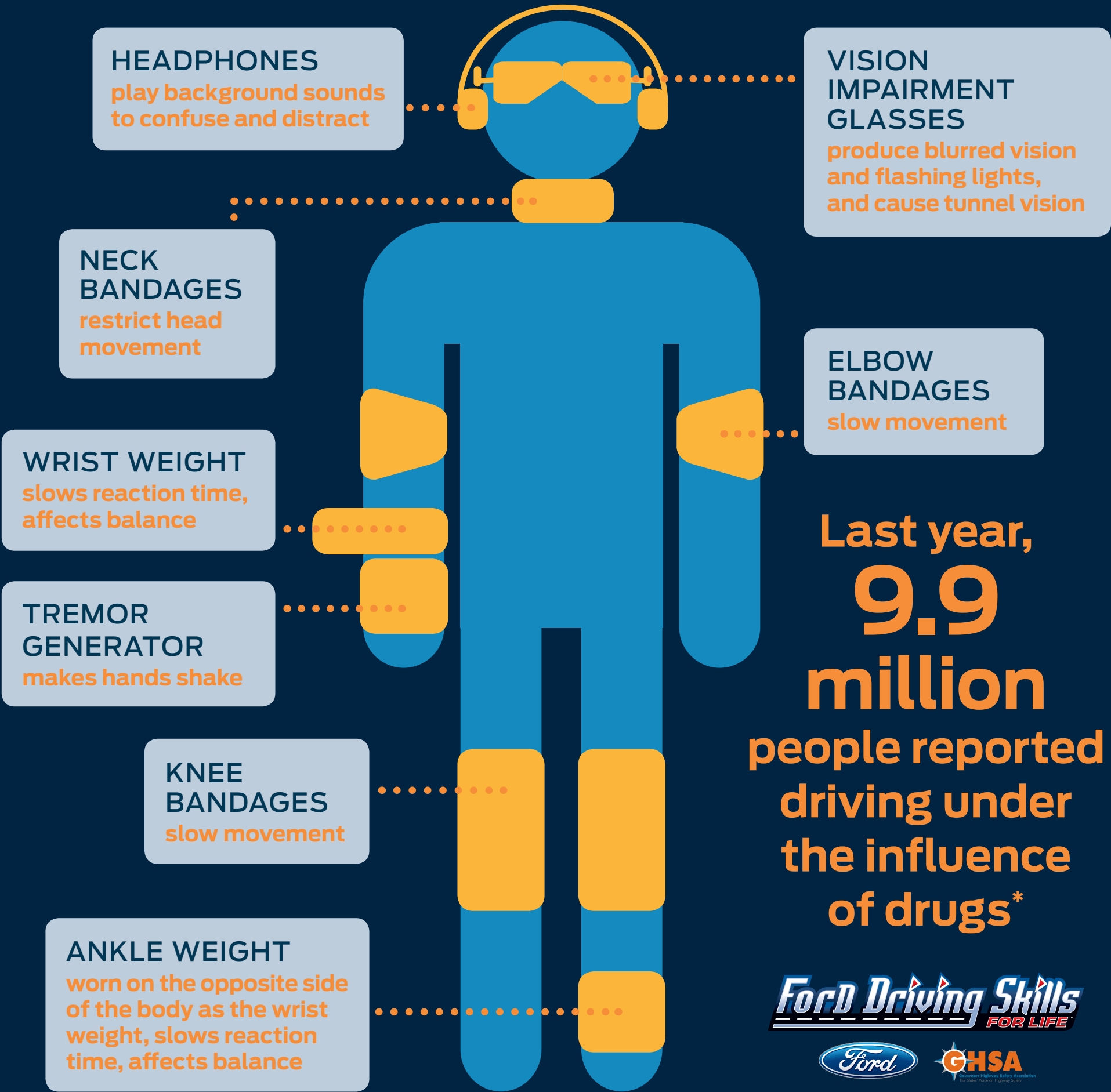


ANATOMY OF A DRUGGED DRIVING SUIT

Ford's Drugged Driving Suit simulates some of the effects of taking various drugs such as cannabis and cocaine



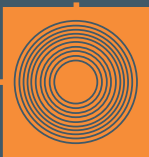
CANNABIS
slows reaction time, affects concentration, reduces ability to steer vehicle



COCAINE
causes erratic behavior. Users lack concentration, and feel sleepy after initial resistance to tiredness



ECSTASY
causes an adrenaline surge, giving drivers a feeling of over-confidence



LSD
causes difficulty judging vehicle speed, movement; hallucinations; confusion



HEROIN
slows reactions, blurs vision, makes driver feel drowsy and confused

*Source: NHTSA <https://www.drugabuse.gov/publications/drugfacts/drugged-driving>